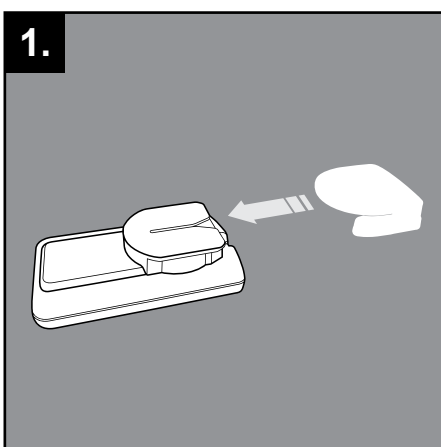


How to install your Heavy Vehicle E-Toll Tag

Here are some important instructions for installing your E-Toll Tag. It is important that you fit your tag correctly to avoid Toll Road Operator fees that apply if your tag is not detected when you are using a toll road. You will know that your tag is working if it makes a sound when you pass through a toll point.

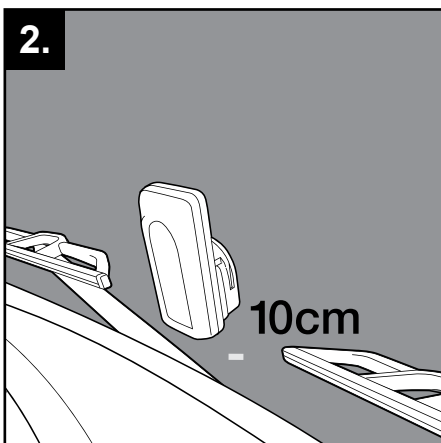
Your electronic tag is supplied with a bracket that you must stick to the inside of the windscreen. The tag must be inserted into the bracket before use.

Tag Model: OBU610 – Heavy vehicles



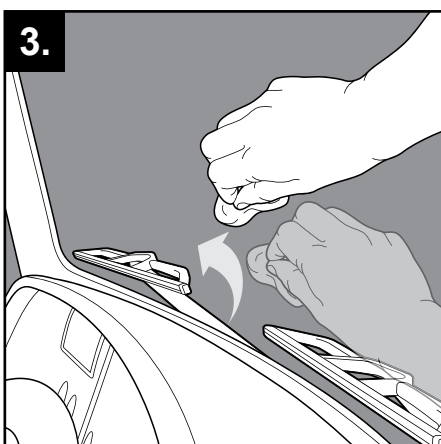
Slide the tag into the bracket until the tag clicks in place.

Note: You may hear the tag beep once after it is inserted into the bracket. This is normal and will only happen the first time you insert your new tag into its bracket.



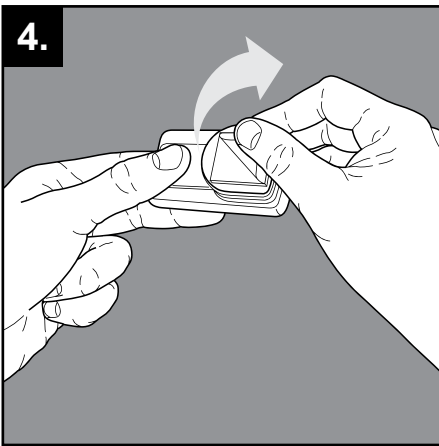
2. Where to place your E-Toll tag

Attach your tag to the inside of the vehicle's windscreen. The tag should be placed vertically in a central position about 10cm above the lower edge of the windscreen.



3. Preparing your windscreen

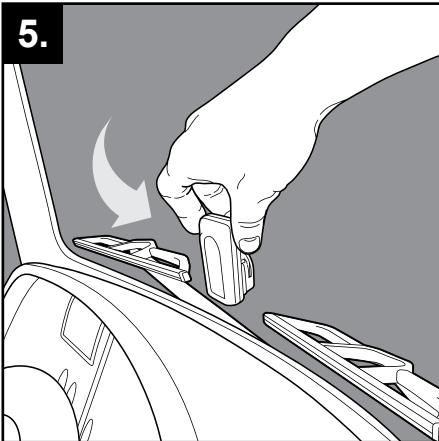
Make sure the area of the windscreen where you are going to place your tag is clean and dry.



4. Preparing the tag for attachment

Next, peel the backing paper from the tape on the back of your bracket.

Careful: Avoid touching the sticky pad as this will reduce its adhesiveness.

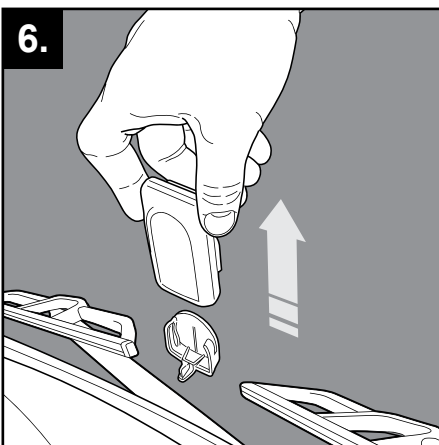


5. Attaching the tag to the windscreen

The tag should be placed vertically with the bracket to the lower edge.

Attach the tag to the windscreen this way up. Be careful to position the tag in the correct location as the tape sticks instantly and you cannot move the bracket once applied. Press firmly against the tag for 10 seconds. The whole sticky pad should be in contact with the windscreen.

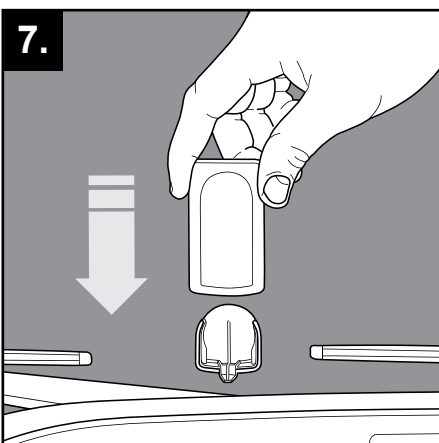
Hint: You can check that the whole sticky pad is in contact by looking from outside the windscreen.



6. Removing the tag from the bracket

Remove the tag from the bracket by holding the top of the tag and pull up.

Careful: Let the tag stay on the windscreen for at least one day before removing it. This will allow the adhesive on the tape to harden.



7. Inserting the tag into the bracket

To insert the tag into the bracket, hold the tag vertically. Position the tag above the bracket and slide down until the tag clicks in place.

CONTACT US

If you have any questions about your E-Toll Tag or account please call 13 18 65 or visit myetoll.com.au